

Our Products Used in :

FOLLOWING INDUSTRIES

FERTILIZER

MINES

SUGAR MILL

OIL MILL

ROLLING MILL

PAPER MILL

CEMENT FACTORY

CHEMICAL PLANT

CATTLE FEED PLANT

TEXTILE MACHINERY

PLASTIC MACHINERY

GOVERNMENT'S
MECHANICAL JOB



6/8, C.M.C. Mill Compound, Near Creta Petrol Pump,
G.I.D.C. Odhav, Ahmedabad - 380023 (India)
Email : kusum1506@yahoo.com Ph. : 079-22891511

*All Kind of : Machinery Spares &
Engineering Job Work*

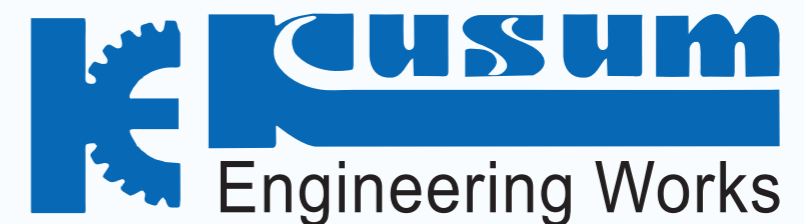
We Deals In :-



**Worm & Worm Wheel
Pin, Bush, Couplings
All Type Sprocket
Gear & Gear Box
Gear Couplings
Crown Pinion
Bevel Gear
Pedustal
Pulley**



*We Know for Quality Materials,
Accuency, & Quick Delivery*





Sub. : Introduction of All kinds of Machinery spares

We Introduce our self as a Machinery Spares & Fabrications Manufacturer based at Ahmedabad. We have experience of 20 years in this Machinery Spares & Fabrications Manufacturing Field. We are manufacturing any type of job work for all types of industries. We have all basic facilities to produce good Quality and better strength's as per your demand.

We are manly deals in Cement Mill, Rolling Mills, Sugar Mills, Fertilizer Mill, Paper Mills, Oil Mills & Robotics etc...

BASIC PRODUCTS :-

All Type of Industrial Gear Box, master gear & pinion, Shaft Chain Sprocket, Conver Sprocket Elvator Sprocket, Dane Sprocket, Girth Gear, Pinion, G.M. Bush, Pin Bush Coupling, Gear Coupling, V-Belt Pulley, Work Wheel, Gear, Dry Ring, Spot Roller, Drum Ring, L.T.Wheel, T-Slat, Mixer Square Shaft, BM - 8 Roller, BM - 6 Roller, Spairer 49 Teeth Beval & 20 Teeth Pinion, Assembly & Without Assembly. Crown Pinion, Squire Conpling, Tail Bar Coupling & Tail Bar RBC & Baggasse Carrier(Conveyer Sprocket 150 Pitch & 200 & 229 Pitch), TRPF Sprocket (AI Sprocket), Gear Coupling, Pin Bush Type Coupling, Worm & Worm Wheel, Shaft, Spur Gear (1 to 30 Module), gear & pinion. Shaft Assembly & Without Assembly etc As per Your Sample or Drg.....

FACILITIES :-

We haveshaf of 20 persons in our own workshop and we are having machining type with another 4 units. We can machine on VMC (3 Axis & 4 Axis) VTL, Hobbing Machines Up to 4250 OD & Up To 30 Module Capacity. & Lathe Machine, Milling Machine, Lag Mechine, Drilling Machine, Soltting Machine And also Crane Capacity 14 Ton. To give better perfomance of your jobs. We are ready to accept any types of complicated Work on base of your Perfect Drawings or Samples.

We are eagerly Waiting for your inquiries on above matter.

Thanking you,

With best regards,

For, Kusum Engineering Works

Contact Person :- Mukesh Patel

Contact Number :- +91 98790 17673

E-mail:- kusum1506@yahoo.com

Web:- WWW.AVADHENTERPRISE.COM



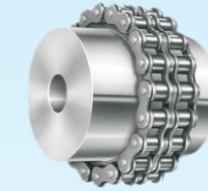
CONVEYOR SPROCKET
Capacity : 14 Teeth 150 Pitch



TRIPLEX SPROCKET
Capacity : 3/8" Pitch to 4" Pitch
O.D. 2" to 144"



WORM & WORM WHEEL
Capacity : O.D. 1" to 12"
1 Module to 20 Module
Wheel : O.D. 2" to 48"
1 Module to 20 Module



CHAIN COUPLE



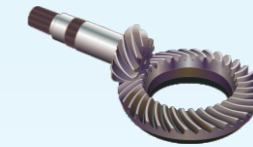
BLOCK TYPE CHAIN
Capacity : 14 Teeth 229 Pitch



BEVEL GEAR
(Super & Spairal Teeth)
Capacity :) O. D. 2" to 48"
1 Module to 1 D.P.
Face width 1" to 10"



SUPER GEAR
Capacity : O.D. 2" to 192"
1 Module to 20 Module
or 32 D.P. to 1 D.P.
Face Width 1" to 18"



SPIRAL BEVAL



DUPLEX SPROCKET
Capacity : 5/16 Pitch to 3 1/2" Pitch
O.D. 2" to 144"



V-BELT PULLEY
Capacity :) O.D. 3" to 80"
No. of Groove 1 to 20



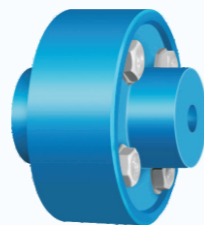
HELICAL GEAR
Capacity : O.D. 2" to 84"
1 Module to 20 Module
or 32 D.P. to 1 D.P.
Face Width 1" to 18"



RACK & PINION
Capacity :



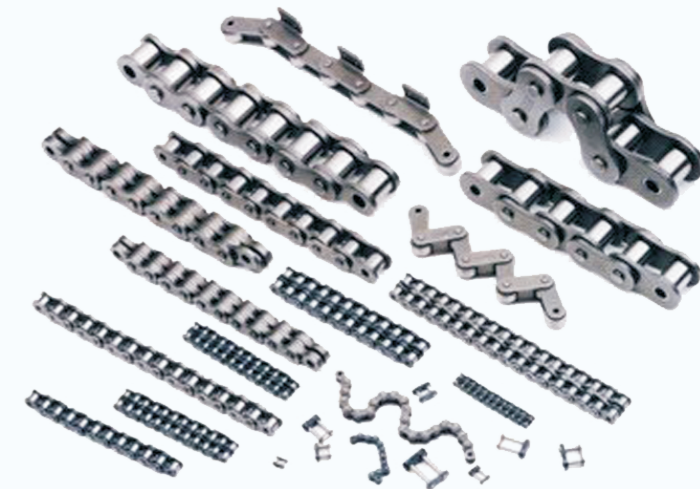
SIMPLEX SPROCKET
Capacity : 1/4 Pitch to 3 1/2" Pitch
O.D. 2" to 144"



FLEXIBLE COUPLING
Capacity :) O.D. 3" to 48"



V-BELT PULLEY
Capacity : O.D. 3" to 80"
Face : 3" to 50"
Split : Flat Pulley



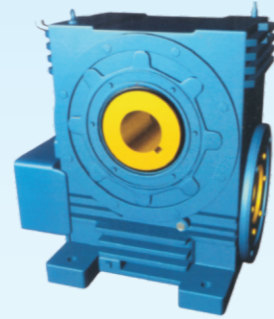
ELIVATOR SPROCKET
Capacity : 8 Teeth to Up to



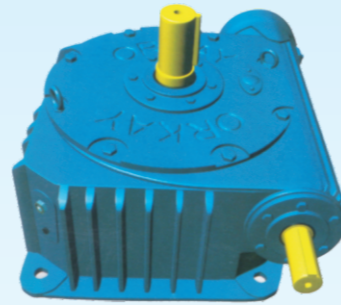
GEAR COUPLE



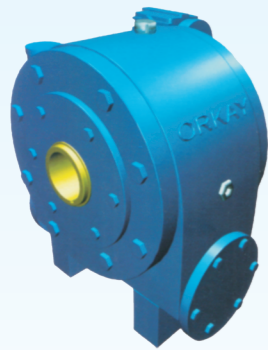
UP MOTOR MOUNTING



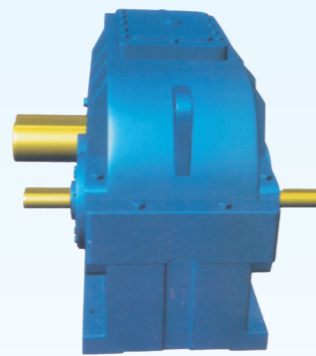
NU-I/O HOLLOW



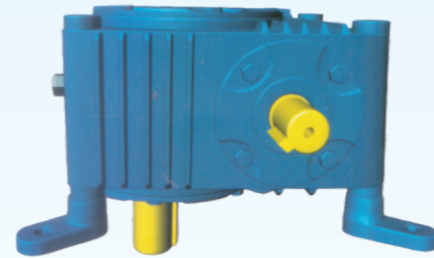
FFU



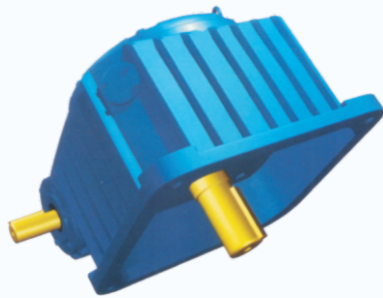
SHAFT MOUNTED WORM REDUCTION



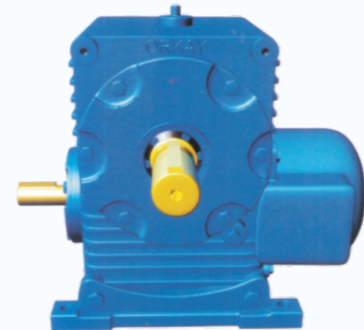
CRANE-DUTY HELICAL



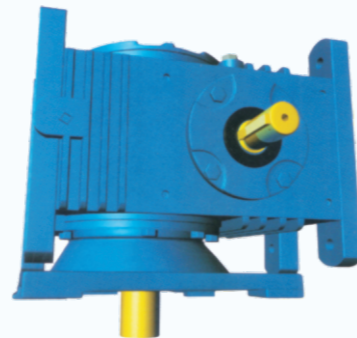
UFRV



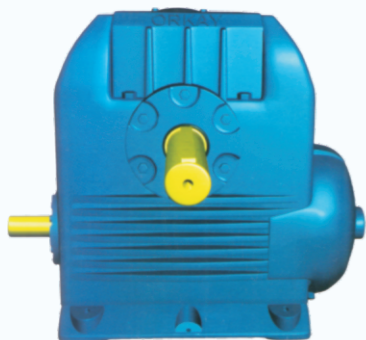
FFV



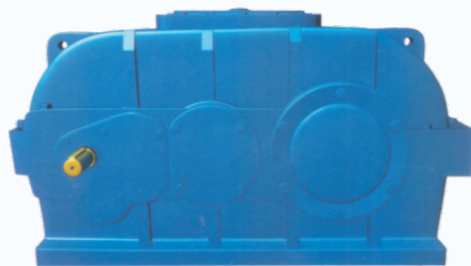
UFR



NU-V



FFMU

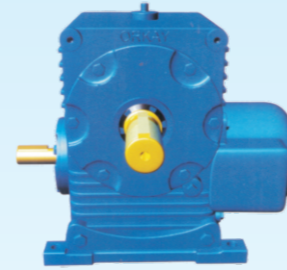


HELICAL FOR BALL MILL



WORM WHEEL

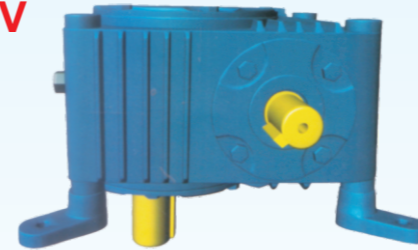
UFR



DIMENSIONS IN MM

size	A	B	C	D	G1	E1	G2	E2	H	H1	J	J1	T	K	L1	L2	L3	M1	M2	V1	W1	T1	V2	W2	T2
1	28.5	52	70.5	151	12	41	16	35	135	100	160	125	13	9	119	119	90	-	-	9.5	4	35	13.5	5	30
1½	38.5	63	66	169	14	41	20	40	138	110	166	131	13	9	111	111	100	-	m8	11.0	5	35	16.5	6	35
1¾	44.4	66	67.6	178	16	35	22	46	148	108	176	134	13	10	111	111	104	-	m8	13	5	30	18.5	6	40
2	50.8	67	82.2	200	16	48	25	57	154	122	186	150	13	10	133	133	117	-	m8	13	5	40	21	8	50
2½	63.5	85	95.5	243	20	50	28	55	190	153	225	184	17	12.5	150	150	133	-	m8	16.5	6	45	24	8	50
3	76.2	98	102	271	25	50	32	65	210	172	240	204	20	12.5	162	180	156	m8	m10	21	8	45	27	10	60

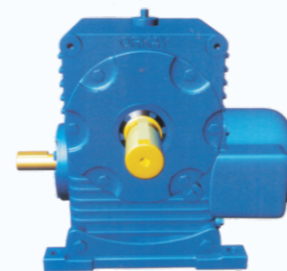
UFRV



DIMENSIONS IN MM

size	A	B	D	E1	E2	G1	G2	H	H1	H2	J	J1	J2	K	L1	L2	L3	L4	M1	M2	T	T1	T2	V1	V2	W1	W2
1	28.5	55	150	41	35	12	16	148	175	79	178	203	93	7	119	119	90	65	-	-	11	35	30	9.5	13	4	5
1½	38.1	61	169	41	40	14	20	150	178	73	175	206	87	9	111	111	100	68	-	M-8	14	36	36	11	16.5	5	6
1¾	44.4	65	175	35	46	16	22	144	194	79	175	230	97	9	111	111	104	66	-	M-8	12	30	40	13	18.5	5	6
2	50.8	65	195	48	57	16	25	164	210	88	191	235	102	9	133	133	117	71	-	M-8	12	40	50	13	21	5	8
2½	63.5	82	238	50	55	20	28	190	250	99	220	282	115	12	150	150	133	85	-	M-8	14	45	50	16.5	24	6	8
3	76.2	90	275	50	65	25	32	224	224	114	259	319	133	12	162	180	156	99	M-8	M-10	18	45	60	21	27	8	10

NU



DIMENSIONS IN MM

size	A	B	C	D	G1	E1	G2	E2	H	H1	J	J1	T	K	L1	L2	L3	M1	M2	V1	W1	T1	V2	W2	T2
1¼	44.45	57	70.05	70.05	16	35	22	46	114	92	142	120	14	11	111	111	103.50	-	M-8	13	5	30	18.50	6	40
2	50.80	70	83	83	16	45	25	57	100	95	140	130	15	11	133	133	117	-	M-8	13	5	40	21	8	50
2¼	57.15	70	85	83	22	50	25	60	104	104	148	133	15	12	142	142	136	-	M-10	18.50	6	45	21	8	55
2½	63.50	80	105.50	150.50	20	50	28	55	115	120	165	160	19	14	150	150	133	-	M-8	16.5	6	45	24	8	50
3.0	76.2	102	104.80	104.80	25	50	38	65	140	160	180	195	21	14	162	180	156	M-08	M-10	21	8	45	33	10	60
3.5	88.9	96	125.1	125.1	25	50	38	80	160	130	210	178	20	14	175	190	172	M-10	M-12	21	8	45	33	10	75
4.0	101.6	110	141.4	141.4	32	60	45	90	180	160	250	205	25	18	212	230	203	M-12	M-12	27	10	50	39.5	14	80
5.0	127	118	165	165	38	70	50	100	230	220	290	280	30	18	242	267	243	M-12	M-16	33	10	65	45.5	14	90
6.0	152.4	128	199.6	199.6	38	72	58	114	266	245	344	305	30	22	279	300	265	M-12	M-16	33	10	70	44.5	16	110
7	177.80	146	200	200	45	86	65	127	306	266	400	345	38	22	318	335	292	M-12	M-16	39.5	14	80	58	18	115
8	203.20	146	224.80	224.80	45	89	70	140	343	266	445	340	40	27	342	360	307	M-16	M-16	39.5	14	80	62.50	20	127
9	228.60	154	252.40	252.40	50	95	75	145	390	282	482	344	42	27	370	385	325	M-16	M-16	44.5	14	90	67.50	20	135
10.5	266.70	172	281.30	281.30	60	115	80	150	432	330	590	432	50	32	450	475	352	M-16	M-16	53	18	110	71	22	147

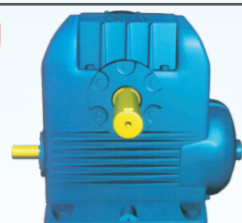
NU-V



DIMENSIONS IN MM

size	A	B	C	D	E1	E2	G1	G2	H2	J2	K	L1	L2	L3	M1	L2	L3	M1	M2	P	T	T1	T2	V1	V2	W1	W2
1¼	44.45	57	84.50	171.50	35	46	16	22	125	145	11	111	111	103.5	-	111	103.50	-	M-08	76	10	30	40	13	18.5	5	6
2	50.80	70	95.50	203.80	45	57	16	25	170	192	11	133	133	117	-	133	117	-	M-08	88	12	40	50	13	21	5	8
2½	57.15	70	97	212	50	60	22	25	106	180	12	142	142	136	-	142	136	-	M-10	86	12	45	55	18.5	21	6	8
2½	63.50	80	112.50	245	50	55	20	28	180	212	14	150	150	133	-	150	133	-	M-08	100	12	45	50	16.5	24	6	8
3.0	76.2	102	129	283	50	65	25	38	200	242	14	162	180	155	M-8	180	156	M-08	M-10	110	20	45	60	21	33	8	10
3.5	88.9	96	120	310	50	80	25	38	161	260	14	175	190	172	M-10	190	172	M-10	M-12	124	14	45	75	21	33	8	10
4	101.6	110	164	353	60	90	32	45	166	280	18	212	230	203	M-12	230	203	M-12	M-12	146	16	50	85	27	39.5	10	14
5	127	118	178	410	70	100	38	50	184	320	18	242	267	243	M-12	267	243	M-12	M-16	167	21	65	90	33	44.5	10	14
6	152.4	128	181	480	72	114	38	58	270	340	22	279	300	265	M-12	300	265	M-12	M-16	202	25	70	110	33	52	10	16
7	177.80	146	200	523.80	86	127	45	65	320	400	22	318	335	292	M-12	335	292	M-12	M-16	249	40	80	115	39.5	58	14	18
8	203.20	146	220	574	89	140	45	70	360	440	27	342	360	307	M-16	360	307	M-16	M-16	253	40	80	127	39.5	62.5	14	20
9	228.60	154	240	635	95	145	5	75	410	480	27	370	385	325	M-16	385	325	M-16	M-16	275	40	90	135	44.5	67.5	14	20
10.5	266.70	172	260	720	115	150	60	80	460	560	32	450	475	352	M-16	475	352	M-16	M-16	330	45	110	147	53	71	18	22

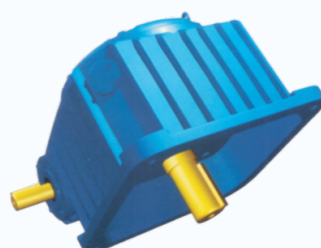
FEMU



DIMENSIONS IN MM

size	A	B	C	E1	E2	G1	G2	H	H1	J	J1	K	L1	L2	L3	T	T1	T2	V1	V2	W1	W2
4	101.6	108	125	60	90	32	45	108	101.6	133	129	18	212	230	203	38	50	85	27	39.5	10	14
5	127	114.3	153	70	100	38	50	123.5	111	146	137.5	18	242	267	243	45	65	90	33	44.5	10	14
6	152.4	127	175	72	114	38	58	133.5	121	182	154	22	279	300	265	45	70	110	33	52	10	16
7	177.8	146	212	86	127	45	65	152	133.4	208.5	162	22	318	335	292	55	83	114	39.4	58	14	18
8	203.2	146	235	89	140	45	70	171.5	139	222.5	171	27	342	360	307	45	80	130	39.5	62.5	14	20
9	228.6	154	270	95	145	50	75	195	141	240	172	27	370	375	325	65	90	135	44.5	67.5	14	20
10	254	171	291	121	152	57.14	82.5	215	165	297	200	32	424	444	375	65	88	142	50.6	73.2	16	22
12	304.8	190	342	124	171	63.5	92.25	260	184	355	222	35	494	514	413	70	88	161	56.9	83.8	16	24

FFV



DIMENSIONS IN MM

size	A	B	C	D	E1	E2	E3	E4	F	G	H	J1	J2	K	L	N	P	Q	R1	R2	S	T	Y1	Y2	Z1	Z2
4	101.6	171.5	212	203	60	90	50	85	32	45	114	114	114	18	32	108	147	140	140	140	110	230	10	14	27	39.5
5	127	190.5	242	243	70	100	65	90	38	50	140	140	140	18	35	135	167	165	165	165	124	267	10	14	33	44.5
6	152.40	209.6	279	265	72	114	70	110	38	58	152	152	152	22	40	145	202	184	184	184	133	300	10	16	33	52
7	177.8	228.6	318	298	86	127	83	114	45	65	177.8	177.8	177.8	23.8	38	151	229	210	210	210	143	305	14	18	39.4	58
8	203.2	241.3	343	311	89	140	83	127	45	70	203.2	203.2	203.2	27	44	159	251	238	238	238	149	360	14	20	39.5	62.5
10	254	279.4	425	375	121	152	79	143	57.14	82.5	260.4	260.4	260.4	31.8	51	194	311	311	299	273	160	444	16	22	50.6	73.2
12	304.8	304.8	495	413	124	171	89	162	63.5	95.25	317.5	317.5	317.5	34.9	57	216	368	368	356	305	177	514	16	24	56.9	83.8

PRODUCTS

